

ALL POSTS AND OTHER WOOD MEMBERS WITHIN 2'-0" OF GRADE LINE TO BE PRESSURE-TREATED WITH PRESERVATIVE

COOPERATIVE EXTENSION WORK IN AGRICULTURE AND HOME ECONOMICS

STATE OF TENNESSEE

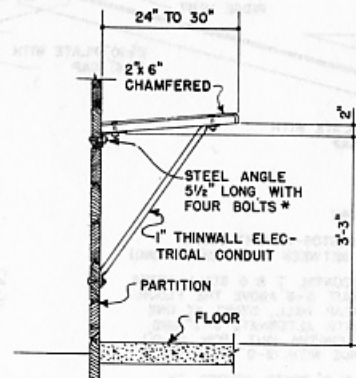
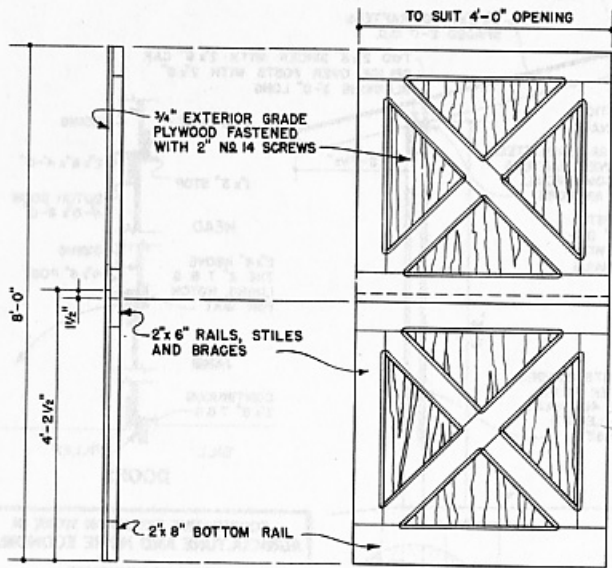
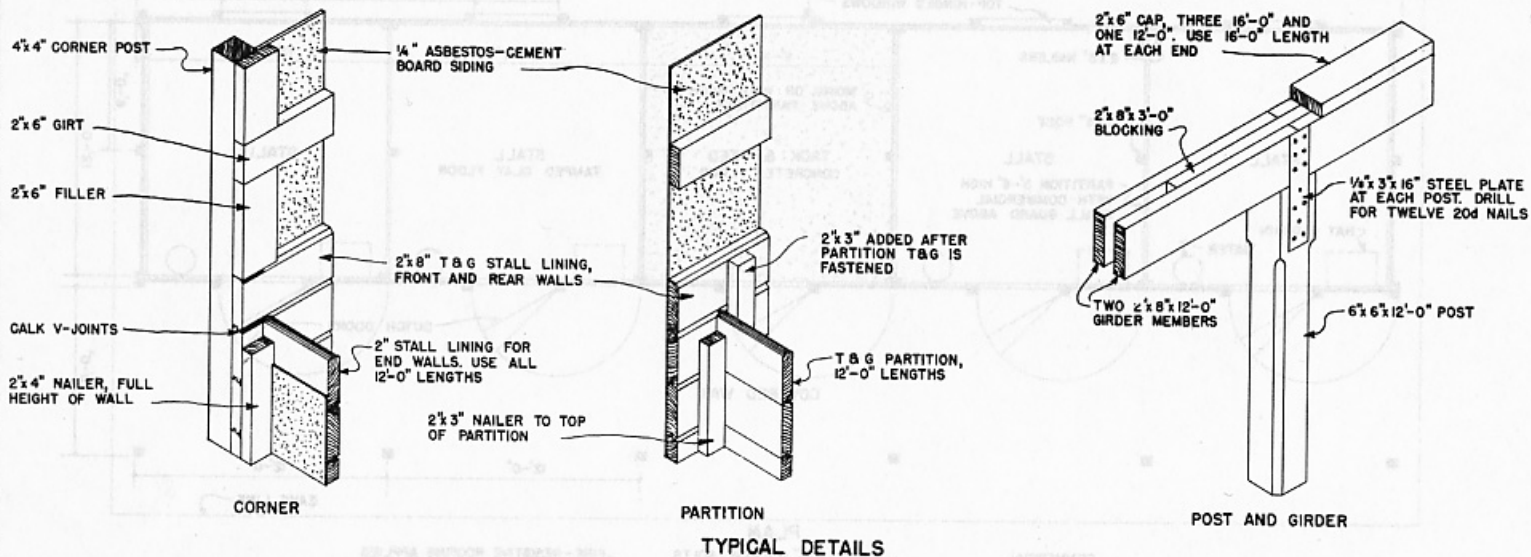
UNIVERSITY OF TENNESSEE

UNITED STATES DEPARTMENT OF AGRICULTURE COOPERATING

POLE-TYPE

SADDLE HORSE BARN

USDA 65 EX. 5994 SHEET 1 OF 2



* 3/8" DIAM. CARRIAGE BOLTS
SPACE RACKS 24" TO 30" APART

COOPERATIVE EXTENSION WORK IN
AGRICULTURE AND HOME ECONOMICS
STATE OF TENNESSEE
UNIVERSITY OF TENNESSEE
AND
UNITED STATES DEPARTMENT OF AGRICULTURE COOPERATING

POLE - TYPE
SADDLE HORSE BARN

USDA '65	EX. 5994	SHEET 2 OF 2
----------	----------	--------------