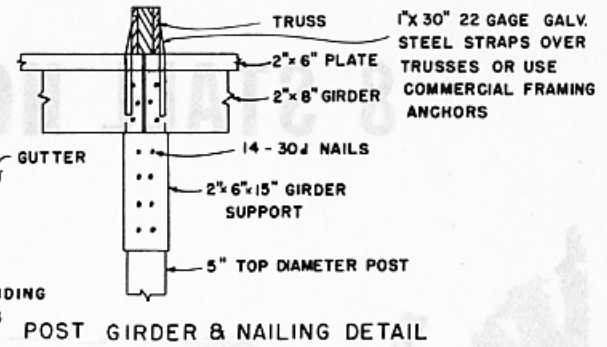
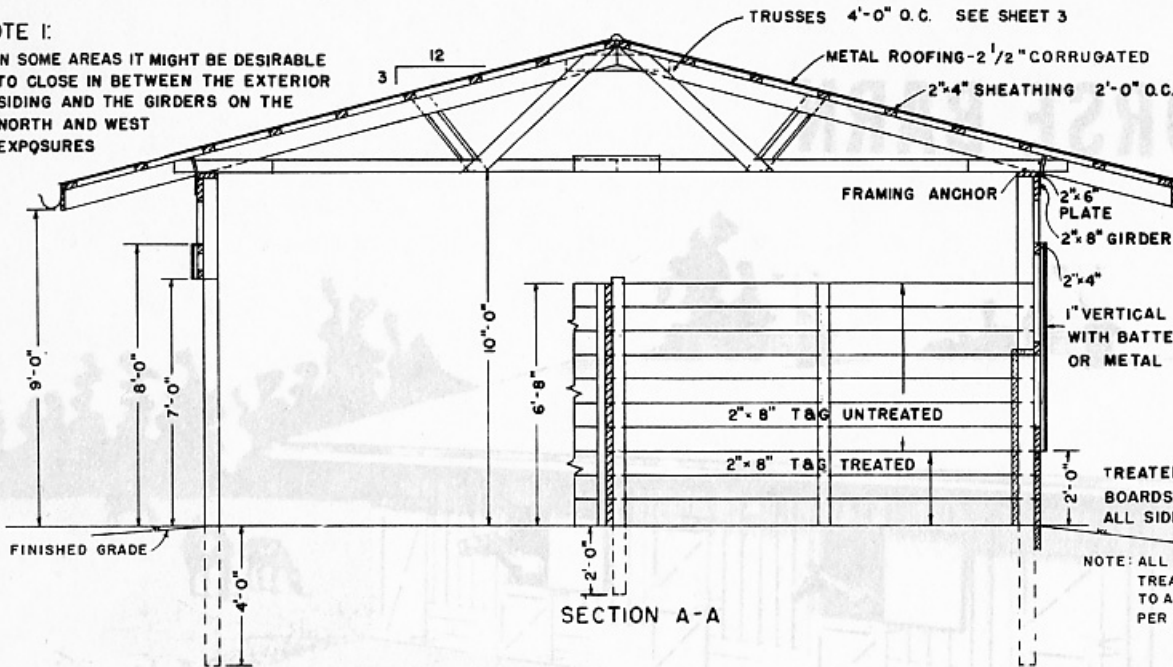
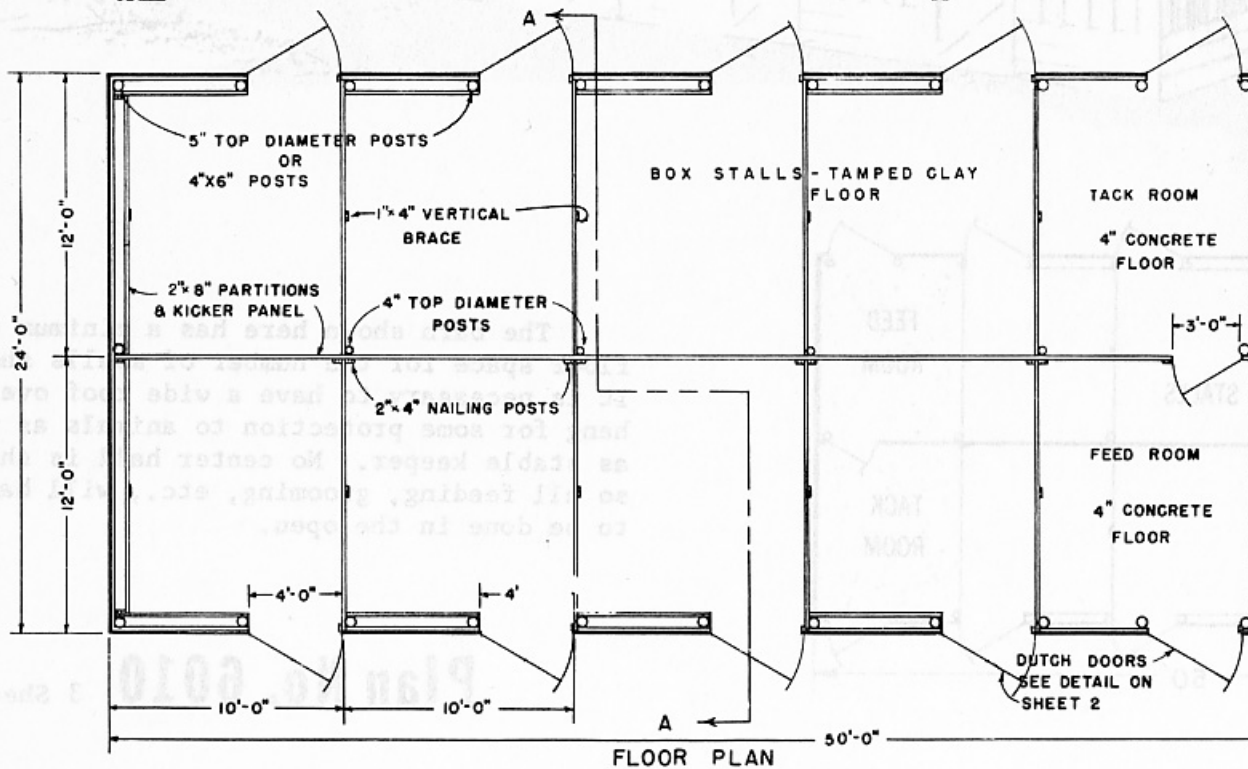
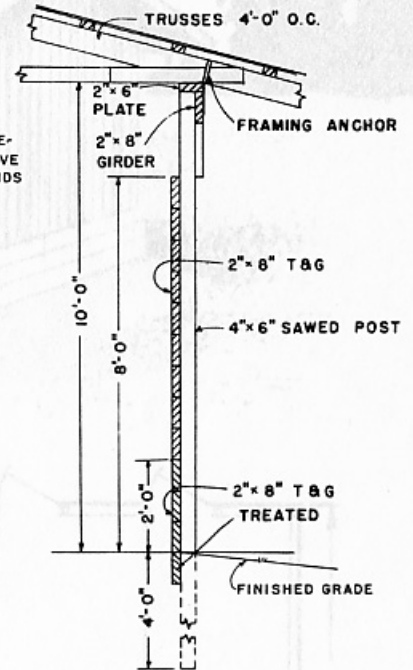


NOTE 1:

IN SOME AREAS IT MIGHT BE DESIRABLE TO CLOSE IN BETWEEN THE EXTERIOR SIDING AND THE GIRDERS ON THE NORTH AND WEST EXPOSURES



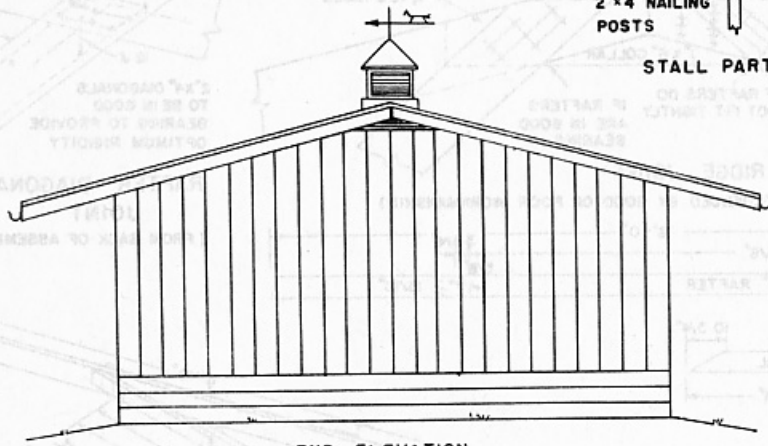
NOTE: ALL POSTS TO BE PRESSURE-TREATED WITH PRESERVATIVE TO A RETENTION OF 8 POUNDS PER CUBIC FOOT.



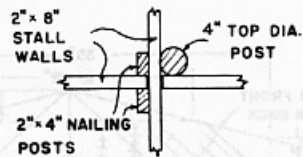
COOPERATIVE EXTENSION WORK IN AGRICULTURE AND HOME ECONOMICS
 STATE OF TENNESSEE
 UNIVERSITY OF TENNESSEE
 AND
 UNITED STATES DEPARTMENT OF AGRICULTURE COOPERATING

HORSE BARN-8 STALL

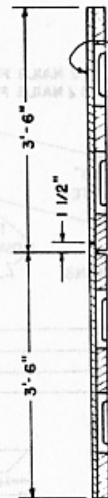
V.A.	'67	EX. 6010	SHEET 1 OF 3
------	-----	----------	--------------



END ELEVATION



STALL PARTION DETAIL



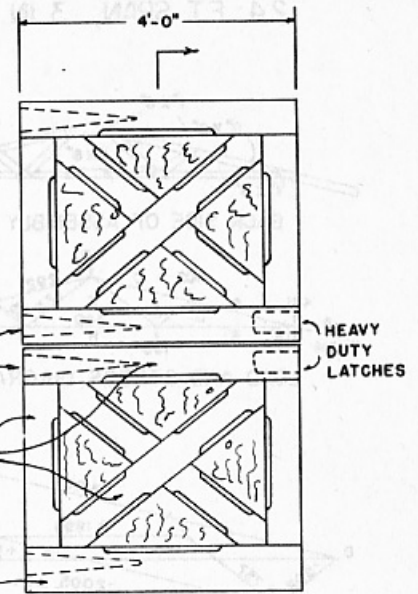
SECTION B-B

3/4" EXTERIOR GRADE PLYWOOD FASTENED WITH 2" N#14 SCREWS

HEAVY DUTY HINGES

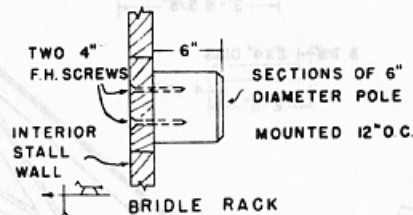
2" x 6" STILES RAILS AND BRACES

2" x 8" BOTTOM RAIL

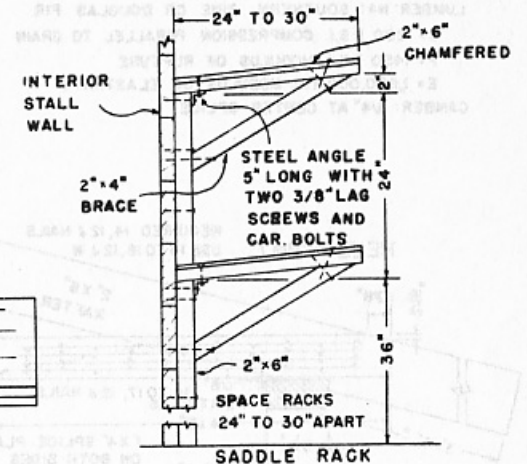


STALL DOOR DETAILS

ELEVATION

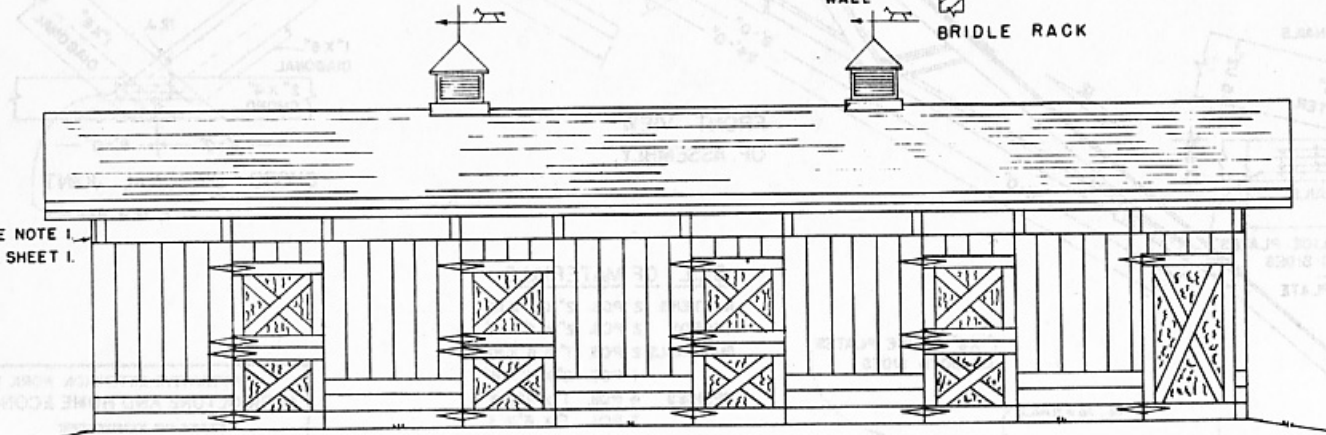


BRIDLE RACK



SADDLE RACK

SEE NOTE 1 ON SHEET 1.



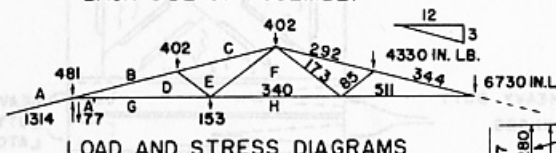
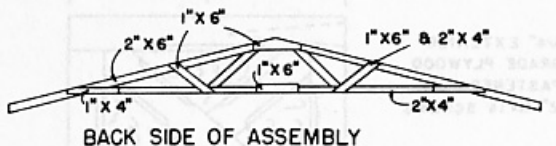
SIDE ELEVATION

COOPERATIVE EXTENSION WORK IN AGRICULTURE AND HOME ECONOMICS
STATE OF TENNESSEE
UNIVERSITY OF TENNESSEE
AND
UNITED STATES DEPARTMENT OF AGRICULTURE COOPERATING

HORSE BARN-8 STALL

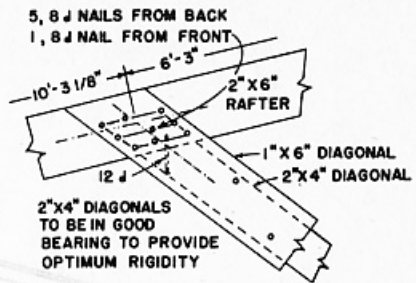
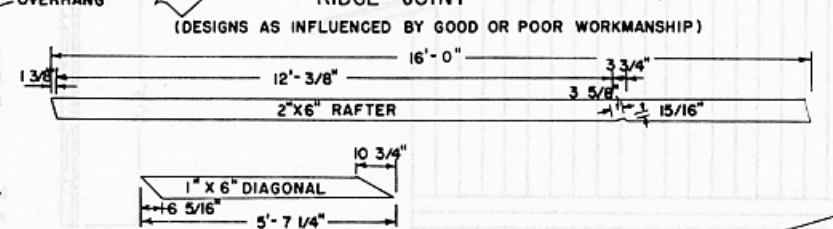
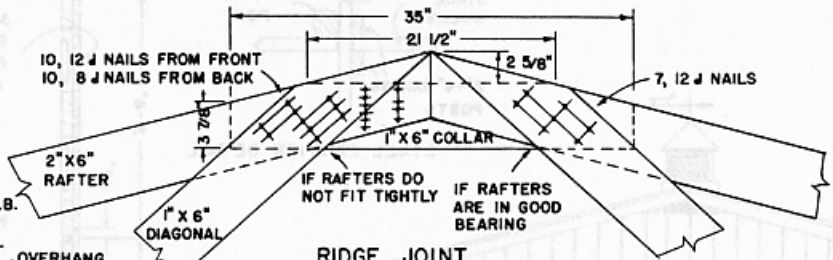
VA. '67 EX. 6010 SHEET 2 OF 3

24- FT SPAN, 3 IN 12 PITCH, NAILED TRUSSED RAFTER WITH 3 1/2 FT. OVERHANG

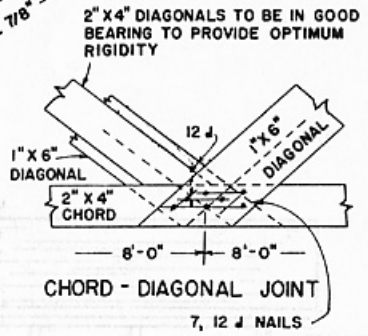
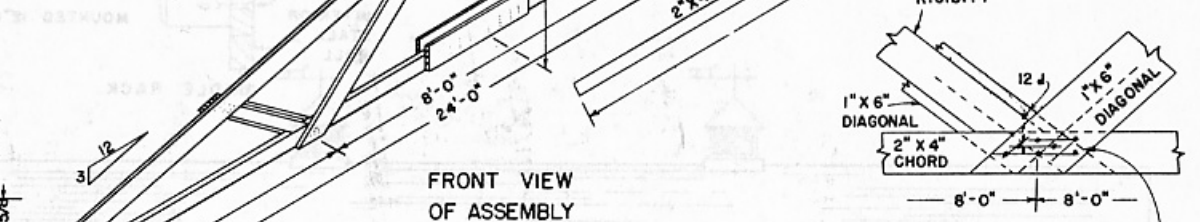
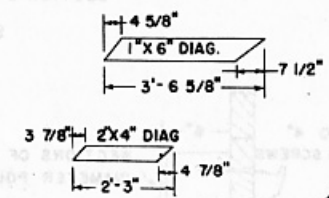


DEAD LOAD AND LIVE LOAD ON ROOF: 22 1/2 LB./SQ. FT.

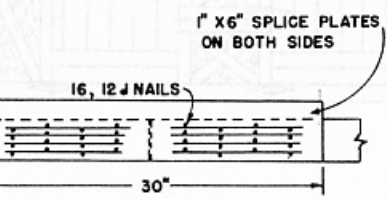
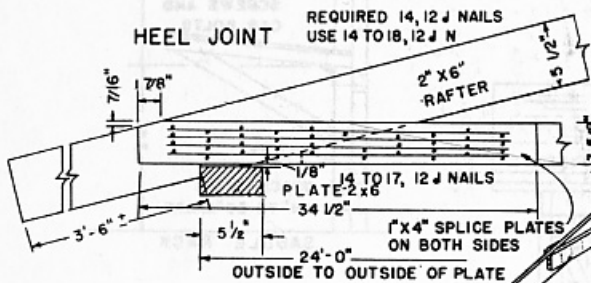
TRUSSED RAFTERS SPACED 4'-0" ON CENTER
 LUMBER: N=1 SOUTHERN PINE OR DOUGLAS FIR
 C= 1200 P.S.I. COMPRESSION PARALLEL TO GRAIN
 F= 1450 P.S.I. MODULUS OF RUPTURE
 E= 1,600,000 P.S.I. MODULUS OF ELASTICITY
 CAMBER: 3/4" AT CENTER SPLICE



RAFTER DIAGONAL JOINT
 (FROM BACK OF ASSEMBLY)



FRONT VIEW OF ASSEMBLY



CENTER-SPLICE JOINT

BILL OF MATERIALS

RAFTERS	2 PCS.	2" X 6" X 18'
CHORDS	2 PCS.	2" X 4" X 12'
DIAGONALS	2 PCS.	1" X 6" X 10'
	1 PCS.	2" X 4" X 6'
SPLICES	4 PCS.	1" X 4" X 3'
	3 PCS.	1" X 6" X 3'
NAILS	BRIGHT HARDENED	
	140 PCS.	- 12 d 3 1/4" X .148" 3 1/4" X .135"
	38 PCS.	- 8 d 2 1/2" X .135" 2 1/2" X .120"

NOTES:

USE HELICALLY THREADED NAILS FOR PERMANENTLY TIGHT, RIGID JOINTS THROUGHOUT STRUCTURE

USE HARDENED NAILS IN DRY SOUTHERN PINE

USE TEMPLATES FOR ALL NAILS TO ASSURE MAXIMUM EFFICIENCY AND EFFECTIVENESS

DRIVE ALL NAILS FROM FRONT EXCEPT THOSE SHOWN AS (O)

COOPERATIVE EXTENSION WORK IN AGRICULTURE AND HOME ECONOMICS

STATE OF TENNESSEE

UNIVERSITY OF TENNESSEE

UNITED STATES DEPARTMENT OF AGRICULTURE COOPERATING

HORSE BARN-8STALL

VA. '67 EX. 6010 SHEET 3 OF 3