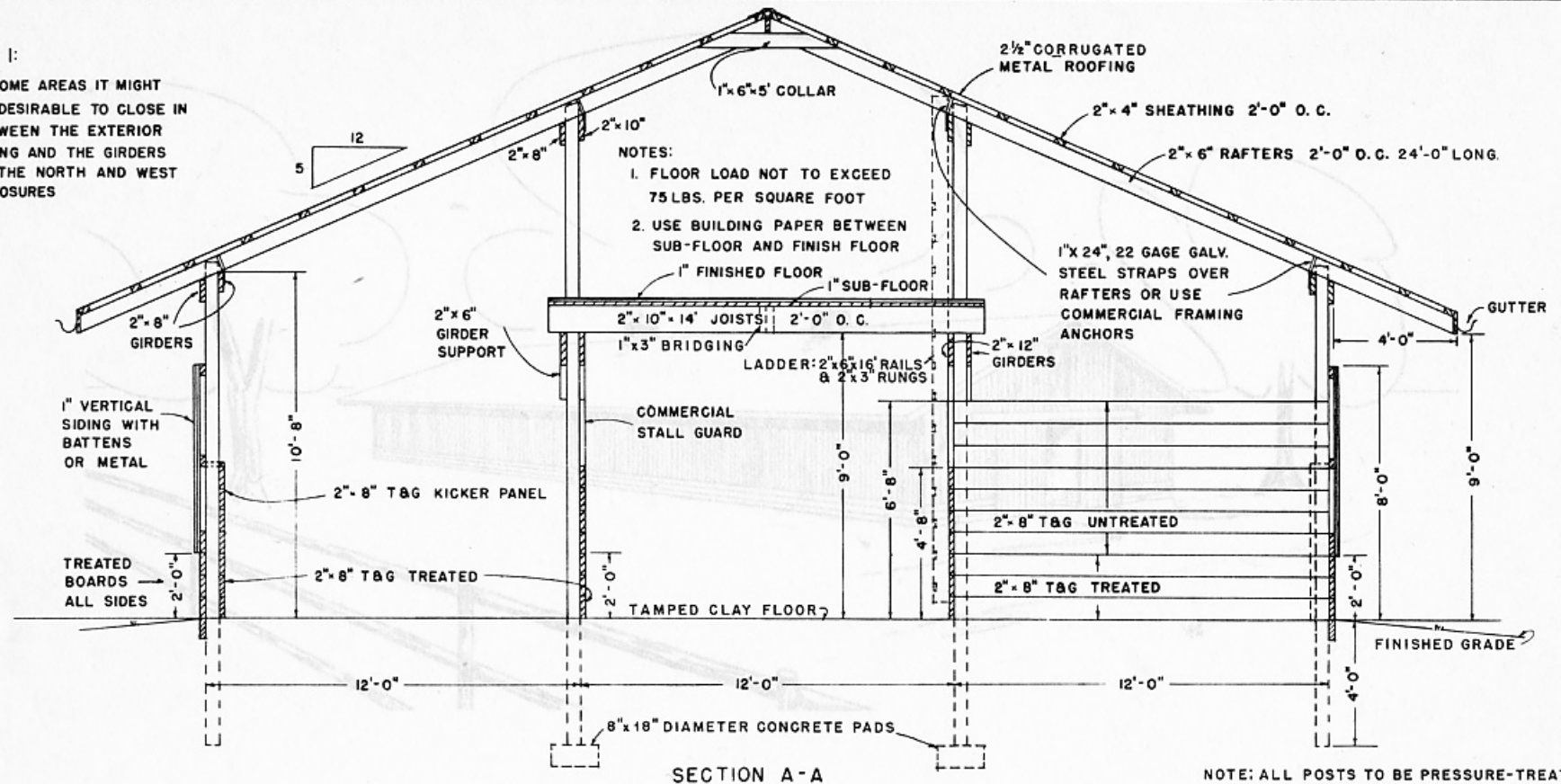


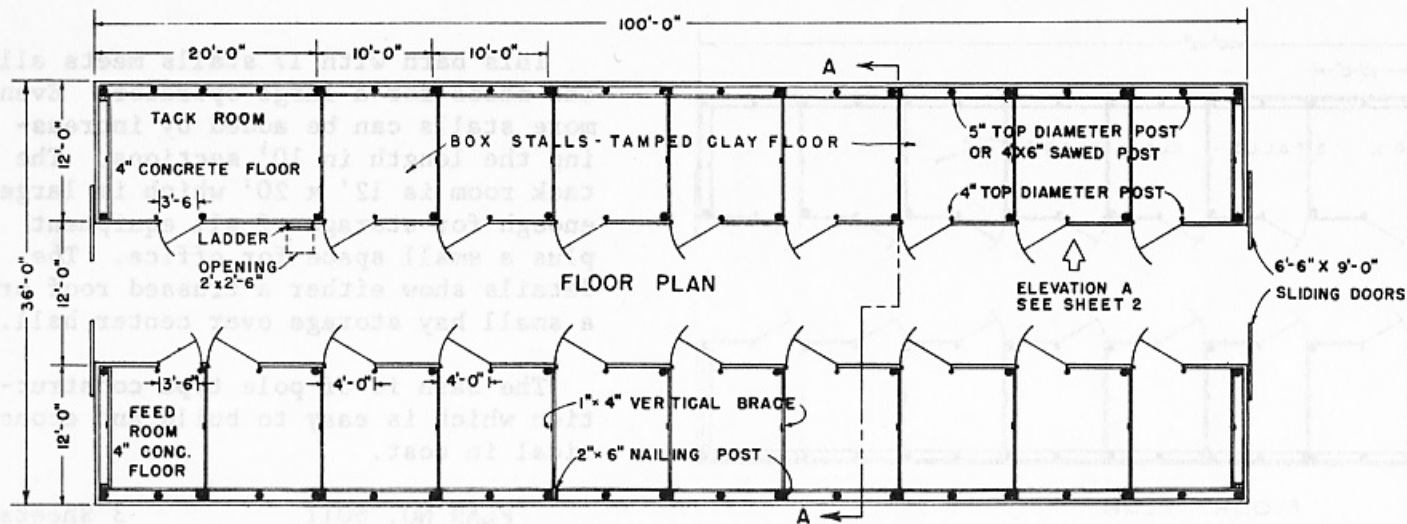
NOTE 1:

IN SOME AREAS IT MIGHT BE DESIRABLE TO CLOSE IN BETWEEN THE EXTERIOR SIDING AND THE GIRDERS ON THE NORTH AND WEST EXPOSURES



SECTION A-A

NOTE: ALL POSTS TO BE PRESSURE-TREATED WITH PRESERVATIVE TO A RETENTION OF 8 POUNDS PER CUBIC FOOT.



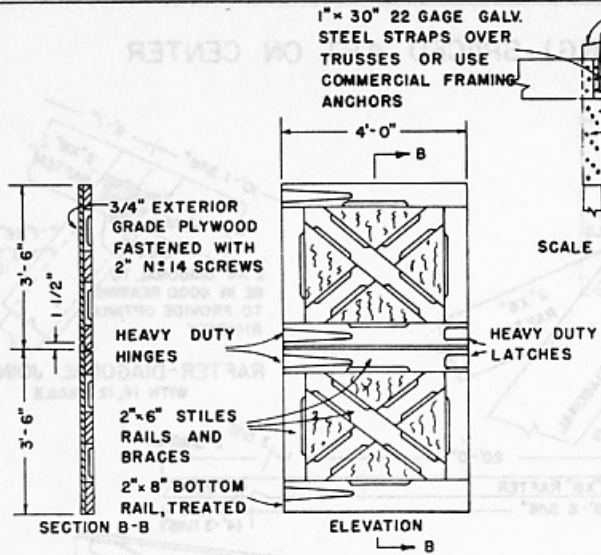
FLOOR PLAN

ELEVATION A SEE SHEET 2

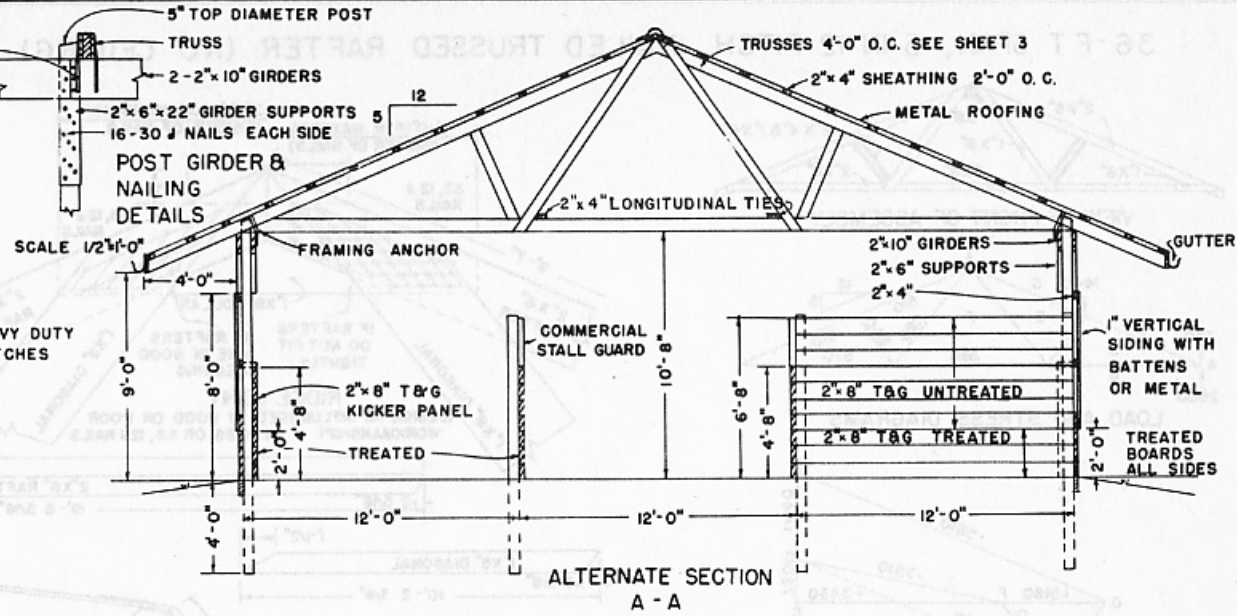
COOPERATIVE EXTENSION WORK IN AGRICULTURE AND HOME ECONOMICS
STATE OF TENNESSEE
UNIVERSITY OF TENNESSEE
AND
UNITED STATES DEPARTMENT OF AGRICULTURE COOPERATING

HORSE BARN-17 STALL

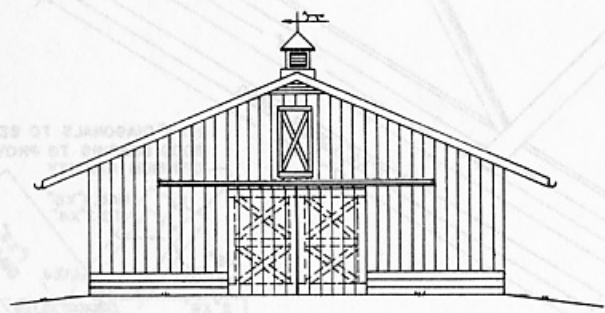
VA. '67 EX. 6011 SHEET 1 OF 3



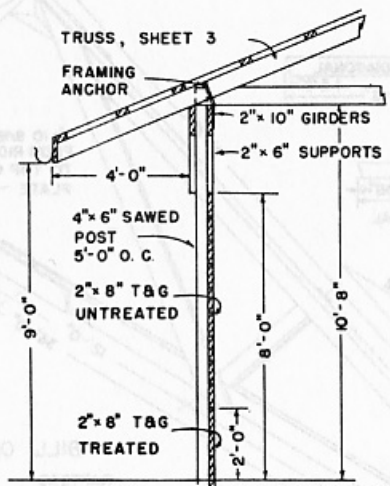
STALL DOOR DETAILS



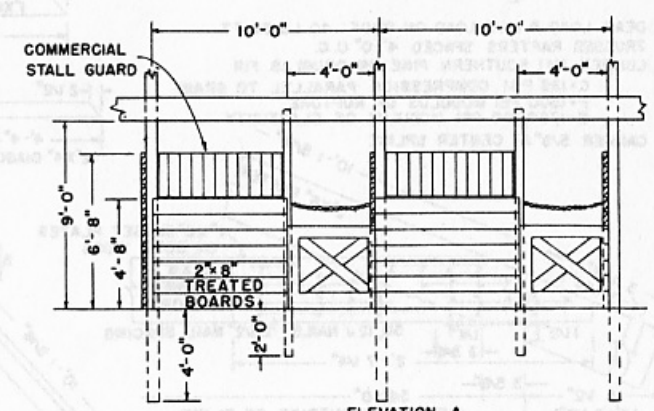
ALTERNATE SECTION A - A



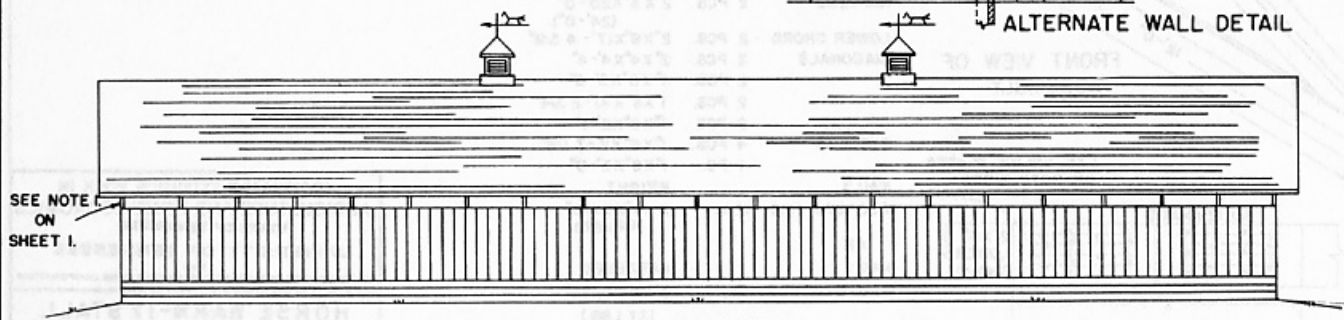
END ELEVATION



ALTERNATE WALL DETAIL



ELEVATION A STALL DETAIL



SIDE ELEVATION

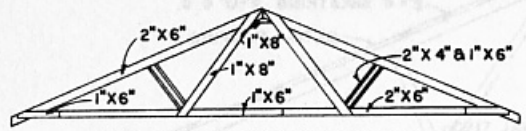
SEE NOTE ON SHEET I.

COOPERATIVE EXTENSION WORK IN AGRICULTURE AND HOME ECONOMICS
 STATE OF TENNESSEE
 UNIVERSITY OF TENNESSEE
 AND
 UNITED STATES DEPARTMENT OF AGRICULTURE COOPERATING

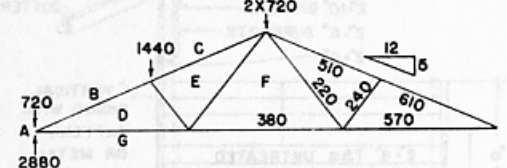
HORSE BARN-17STALL

VA. '67 EX. 6011 SHEET 2 OF 3

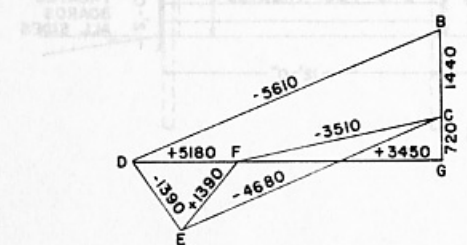
36-FT SPAN, 5 IN 12 PITCH, NAILED TRUSSED RAFTER (NO CEILING) SPACED 4FT. ON CENTER



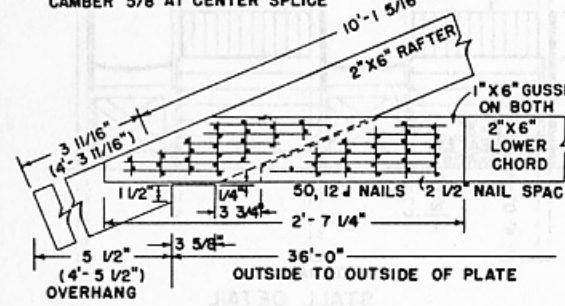
VIEW OF FRONT OF ASSEMBLY



LOAD AND STRESS DIAGRAMS

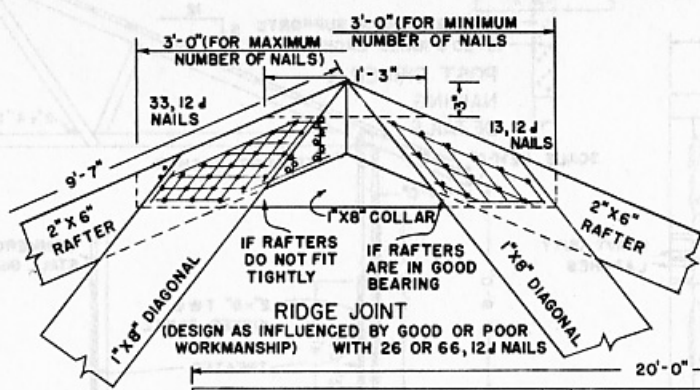


DEAD LOAD & LIVE LOAD ON ROOF: 40 LB/SQ. FT.
 TRUSSED RAFTERS SPACED 4'-0" O.C.
 LUMBER #1 SOUTHERN PINE OR DOUGLAS FIR
 C=135 PSI COMPRESSION PARALLEL TO GRAIN
 F=1500 PSI MODULUS OF RUPTURE
 E=1760000 PSI MODULUS OF ELASTICITY
 CAMBER 5/8" AT CENTER SPLICE

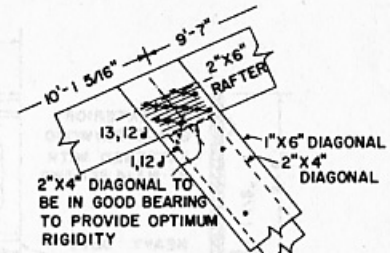


HEEL JOINT WITH 50, 12d NAILS

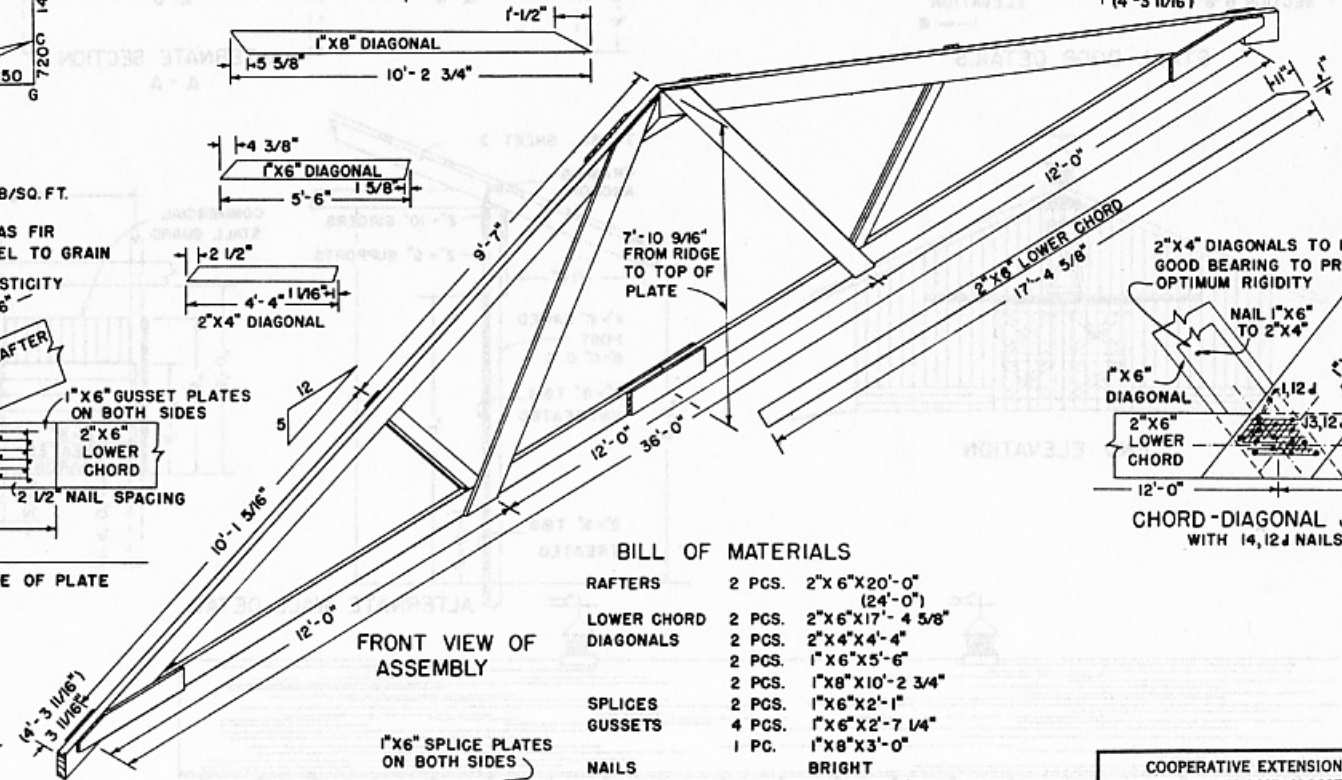
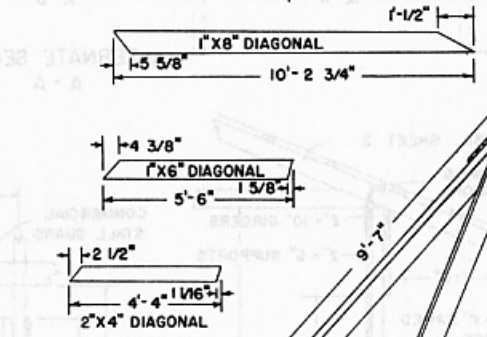
NOTES:
 USE HELICALLY THREADED NAILS FOR PERMANENTLY TIGHT JOINTS THROUGHOUT STRUCTURE
 USE HARDENED NAILS IN DRY SOUTHERN PINE
 DRIVE ALL NAILS FROM FRONT EXCEPT THOSE SHOWN AS (O)
 USE TEMPLATES FOR LOCATING ALL NAILS TO ASSURE MAXIMUM EFFICIENCY AND EFFECTIVENESS



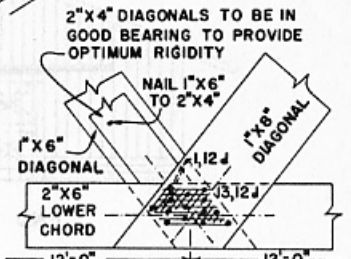
RIDGE JOINT (DESIGN AS INFLUENCED BY GOOD OR POOR WORKMANSHIP) WITH 26 OR 66, 12d NAILS



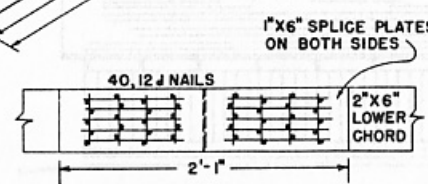
RAFTER-DIAGONAL JOINT WITH 14, 12d NAILS



FRONT VIEW OF ASSEMBLY



CHORD-DIAGONAL JOINT WITH 14, 12d NAILS



CENTER-SPLICE JOINT WITH 40, 12d NAILS

BILL OF MATERIALS

RAFTERS	2 PCS.	2"x6"x20'-0" (24'-0")
LOWER CHORD	2 PCS.	2"x6"x17'-4 5/8"
DIAGONALS	2 PCS.	2"x4"x4'-4"
	2 PCS.	1"x6"x5'-6"
	2 PCS.	1"x8"x10'-2 3/4"
SPLICES	2 PCS.	1"x6"x2'-1"
GUSSETS	4 PCS.	1"x6"x2'-7 1/4"
	1 PC.	1"x8"x3'-0"
NAILS		BRIGHT
230-270 PCS.	12d	3 1/4"x0.148" (44 LBS.)
		OR
230-270 PCS.	12d	HARDENED
		3 1/4"x0.135" (37 LBS.)

COOPERATIVE EXTENSION WORK IN AGRICULTURE AND HOME ECONOMICS
 STATE OF TENNESSEE
 UNIVERSITY OF TENNESSEE
 AND UNITED STATES DEPARTMENT OF AGRICULTURE COOPERATING

HORSE BARN-17 STALL

VA. '67 EX. 6011 SHEET 3 OF 3